

**455 Sherman Street
Denver, CO**

**Available For
Sublease**



Property Overview



SIZE AVAILABLE
6,110 RSF (2nd floor)



TOTAL BUILDING SIZE
117,305 RSF



SUBLEASE EXPIRATION
January 31, 2025



ASKING RATE
\$23.00/RSF Full Service



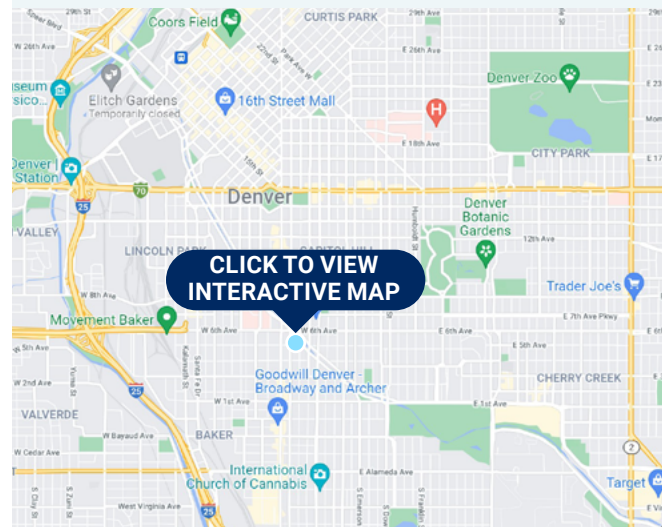
TIMING
Immediately



**Plug and play
office space**



Location Overview



Contact Information

JAKE WILSON

(214) 271-0578

jwilson@siteselectiongroup.com

SAM PRUITT

(214) 271-0585

spruitt@siteselectiongroup.com

JASON BOLLHOEFNER

(303) 395-0116

jason@crebenchmark.com

TANNER MASON

(303) 395-0112

tanner@crebenchmark.com



SITE SELECTION GROUP

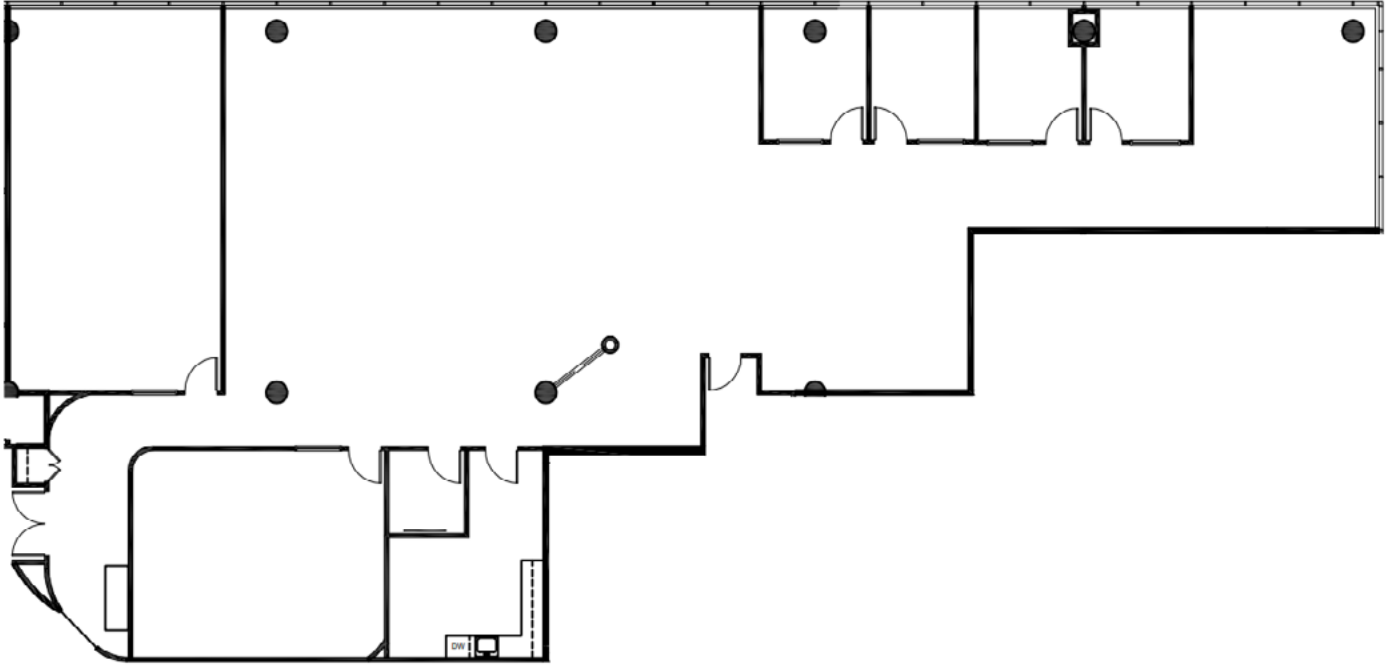


**BENCHMARK
COMMERCIAL**

The information contained herein was obtained from sources believed reliable; however, Site Selection Group makes no guarantees, warranties or representations as to the completeness or accuracy thereof. The presentation of this property is submitted subject to errors, omissions, change of price or conditions prior to sale or lease, or withdrawal without notice.

455 Sherman Street Denver, CO

2nd floor | 6,110 RSF



Contact Information

JAKE WILSON
(214) 271-0578
jwilson@siteselectiongroup.com

SAM PRUITT
(214) 271-0585
spruitt@siteselectiongroup.com

JASON BOLLHOEFNER
(303) 395-0116
jason@crebenchmark.com

TANNER MASON
(303) 395-0112
tanner@crebenchmark.com



The information contained herein was obtained from sources believed reliable; however, Site Selection Group makes no guarantees, warranties or representations as to the completeness or accuracy thereof. The presentation of this property is submitted subject to errors, omissions, change of price or conditions prior to sale or lease, or withdrawal without notice.